



Coastal and estuarine water quality in Tāmaki Makaurau / Auckland 2021-2022 annual data report

Auckland Council technical report, TR2023/19

Supplementary data file 3: Seasonal box plots per harbour of water quality index parameters

© 2023 Auckland Council, New Zealand

Auckland Council disclaims any liability whatsoever in connection with any action taken in reliance of this document for any error, deficiency, flaw or omission contained in it.

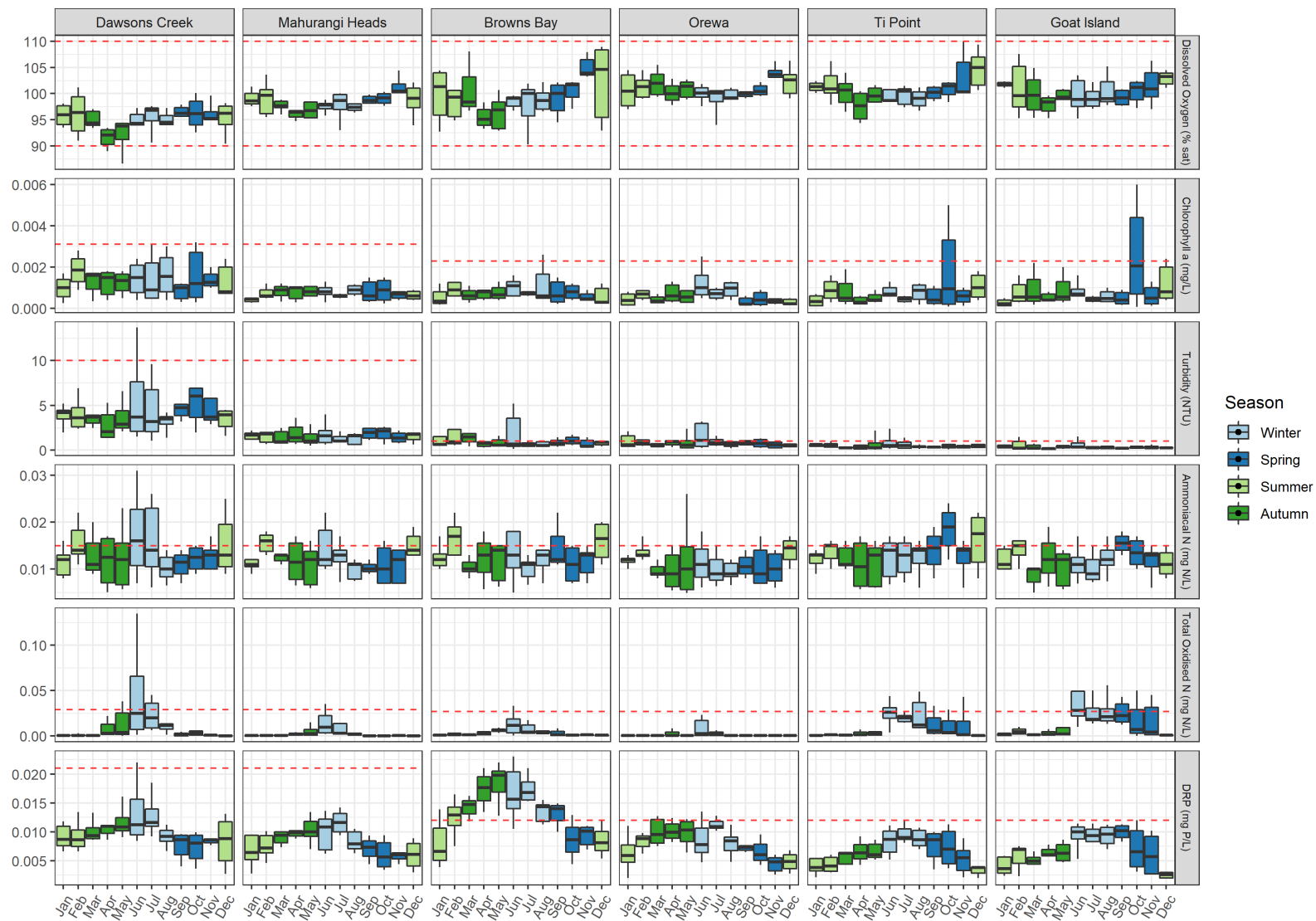


Figure 1. Seasonal box plots for the 2018 to 2022 hydrological years for East Coast monitoring sites. Box plots show the 5th percentile (lower whisker), 25th percentile (lower quartile), median (middle line), 75th percentile (upper quartile), and 95th percentile (upper whisker). Dashed red lines show the Auckland Council Water Quality Index Guideline Values.

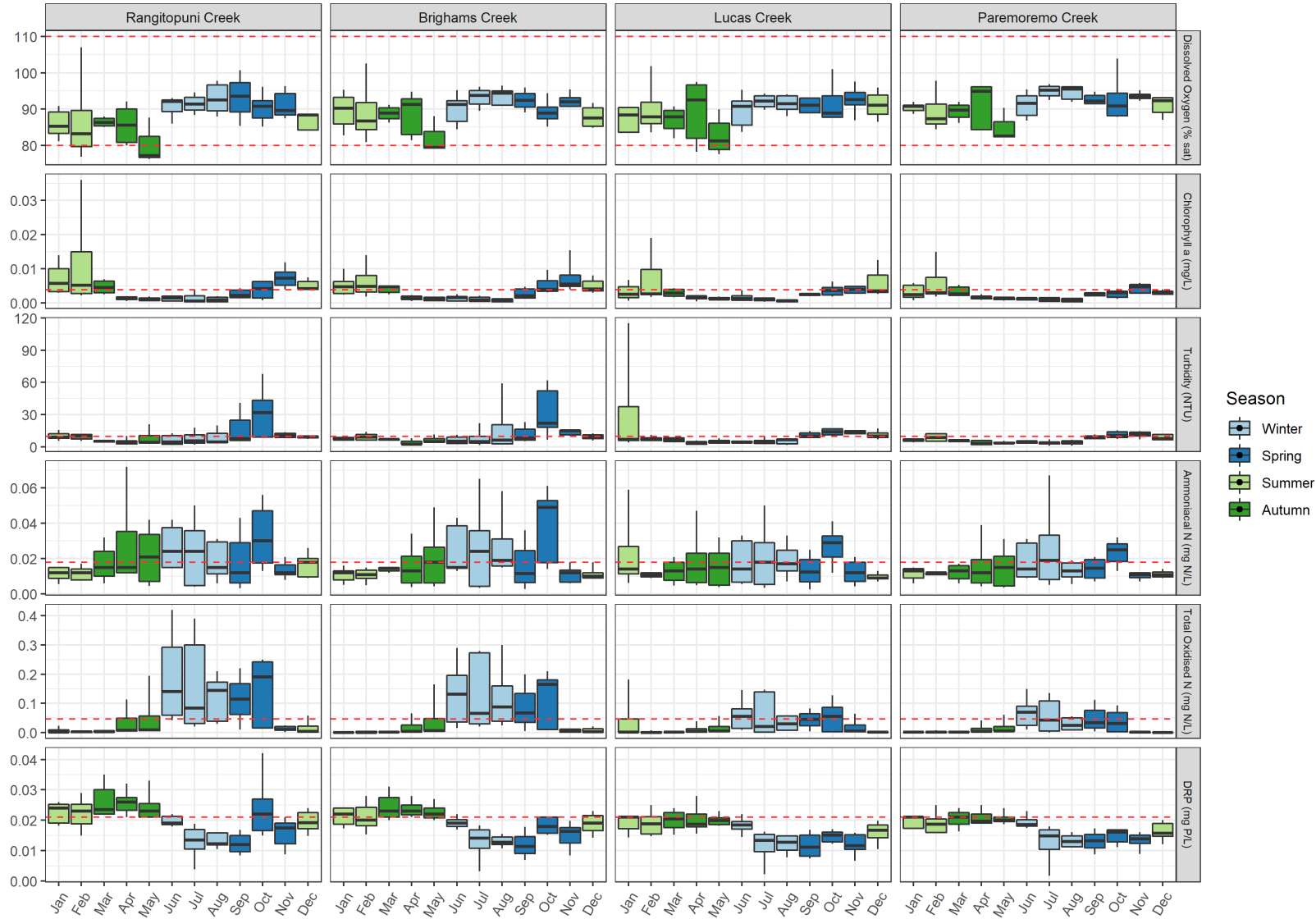


Figure 2 Seasonal box plots for the 2018 to 2022 hydrological years for Upper Waitemata Harbour monitoring sites. Box plots show the 5th percentile (lower whisker), 25th percentile (lower quartile), median (middle line), 75th percentile (upper quartile), and 95th percentile (upper whisker). Dashed red lines show the Auckland Council Water Quality Index Guideline Values.

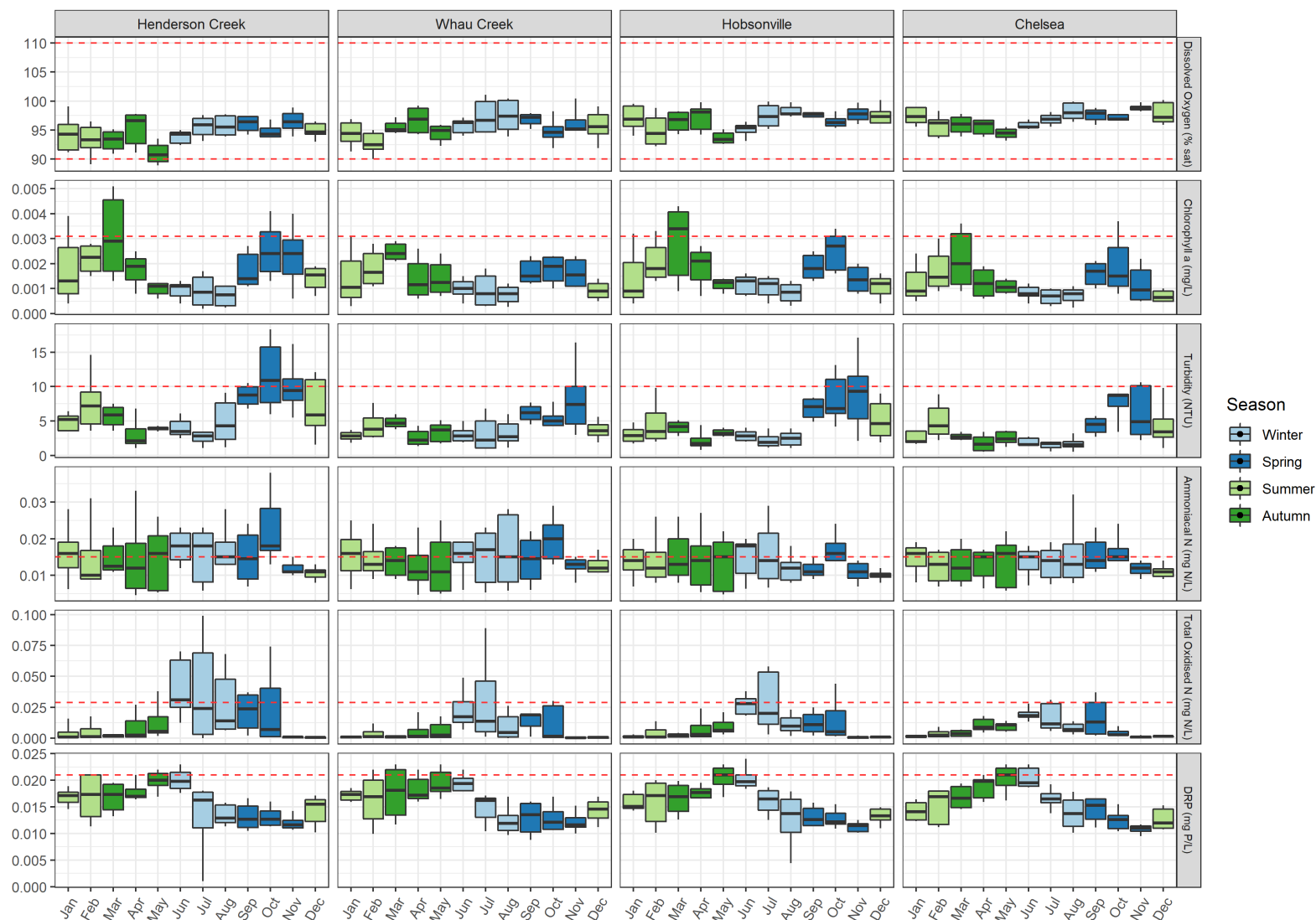


Figure 3 Seasonal box plots for the 2018 to 2022 hydrological years for Central Waitemata Harbour monitoring sites. Box plots show the 5th percentile (lower whisker), 25th percentile (lower quartile), median (middle line), 75th percentile (upper quartile), and 95th percentile (upper whisker). Dashed red lines show the Auckland Council Water Quality Index Guideline Values.

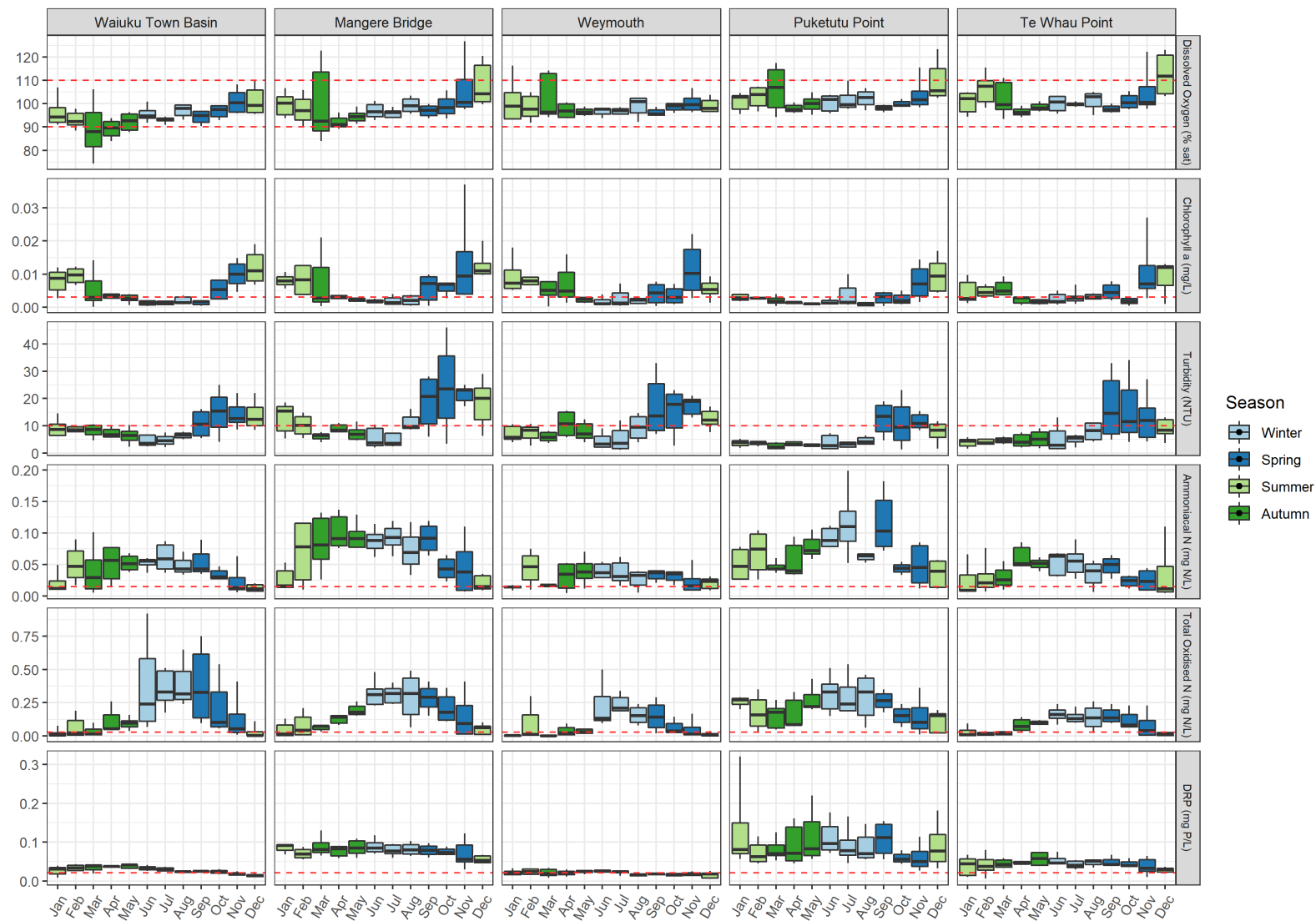


Figure 4 Seasonal box plots for the 2018 to 2022 hydrological years for Manukau Harbour monitoring sites – Part 1. Box plots show the 5th percentile (lower whisker), 25th percentile (lower quartile), median (middle line), 75th percentile (upper quartile), and 95th percentile (upper whisker). Dashed red lines show the Auckland Council Water Quality Index Guideline Values.

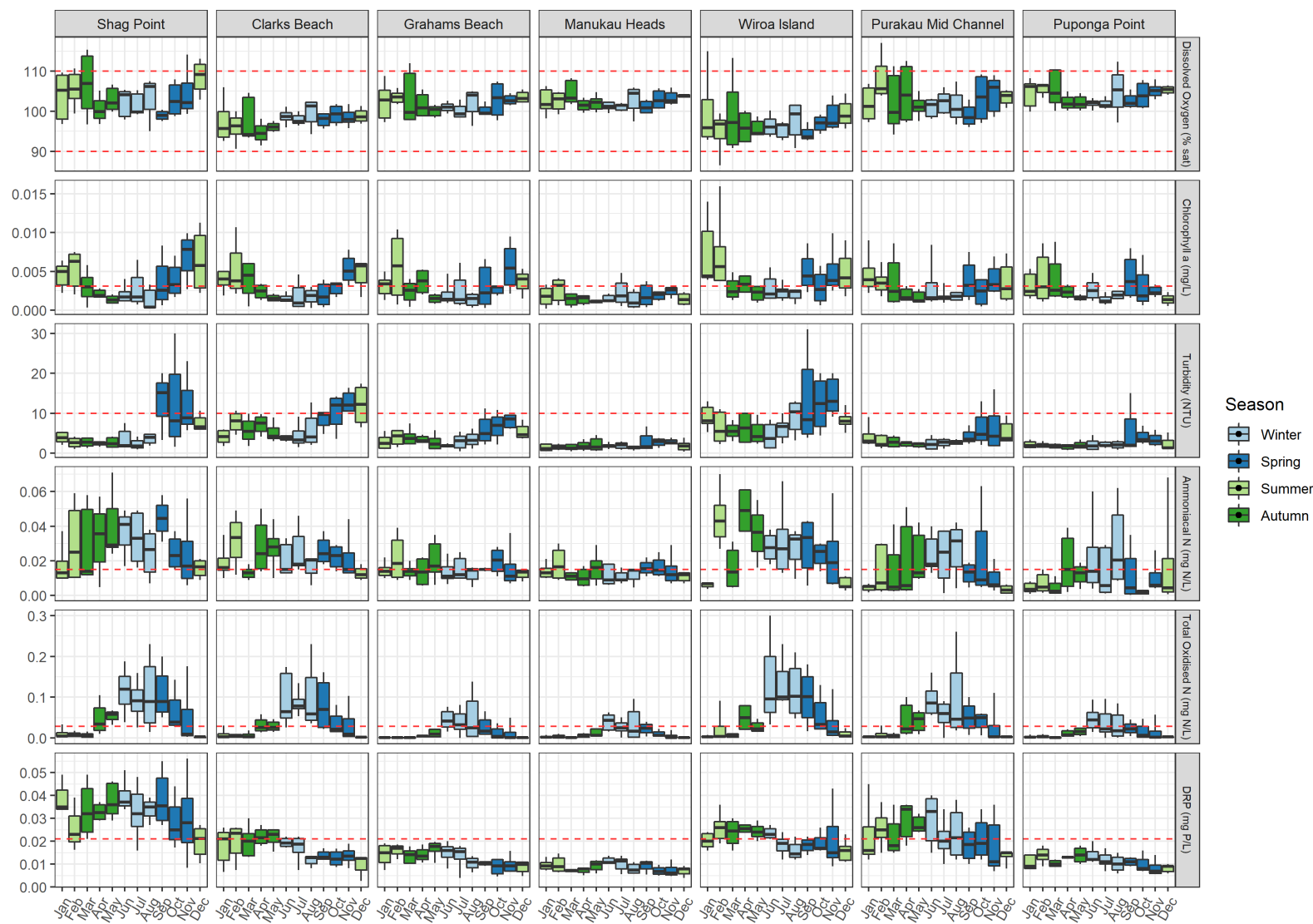


Figure 5 Seasonal box plots for the 2018 to 2022 hydrological years for Manukau Harbour monitoring sites – Part 2. Box plots show the 5th percentile (lower whisker), 25th percentile (lower quartile), median (middle line), 75th percentile (upper quartile), and 95th percentile (upper whisker). Dashed red lines show the Auckland Council Water Quality Index Guideline Values.

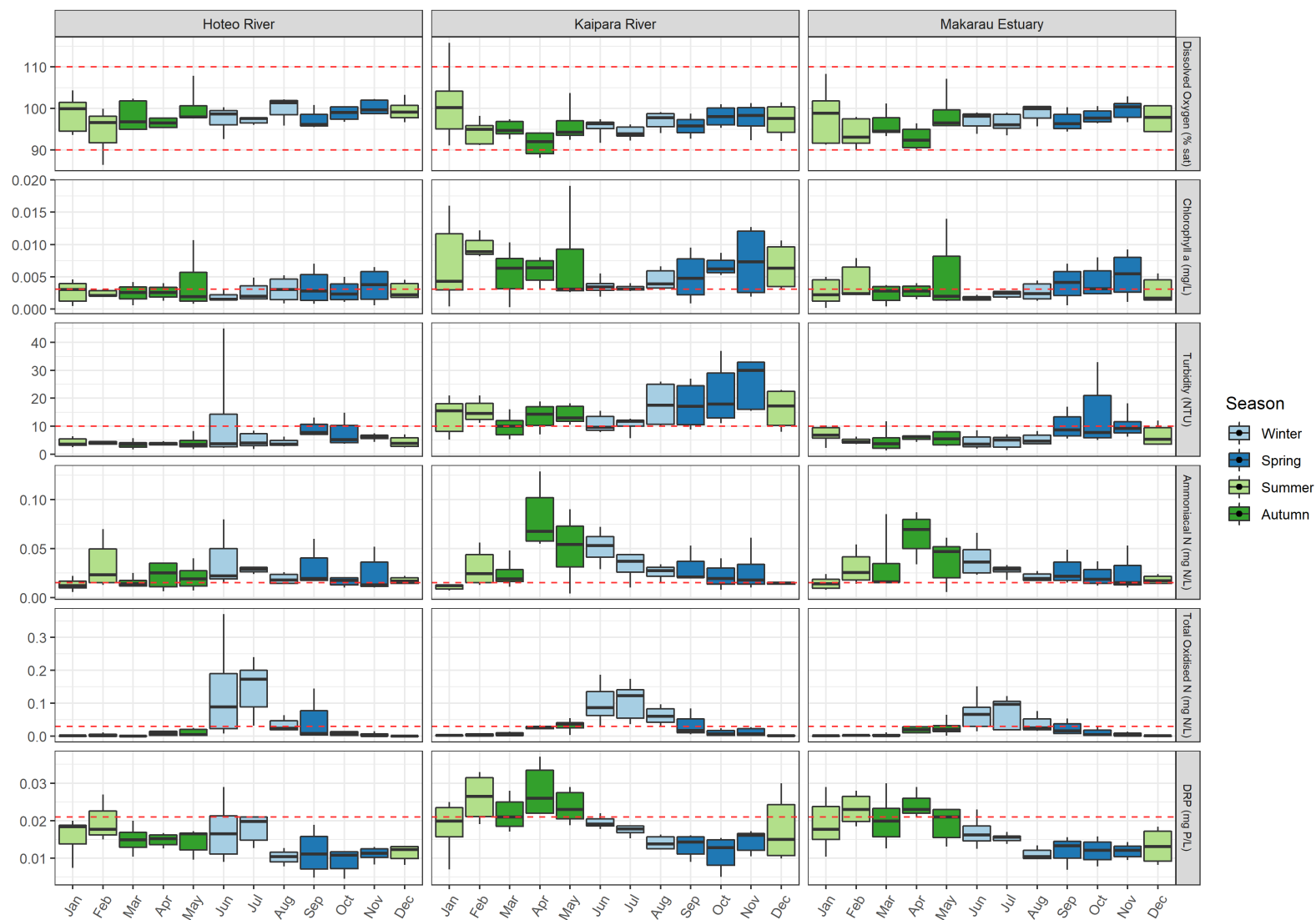


Figure 6 Seasonal box plots for the 2018 to 2022 hydrological years for Kaipara Harbour monitoring sites – Part 1. Box plots show the 5th percentile (lower whisker), 25th percentile (lower quartile), median (middle line), 75th percentile (upper quartile), and 95th percentile (upper whisker). Dashed red lines show the Auckland Council Water Quality Index Guideline Values.

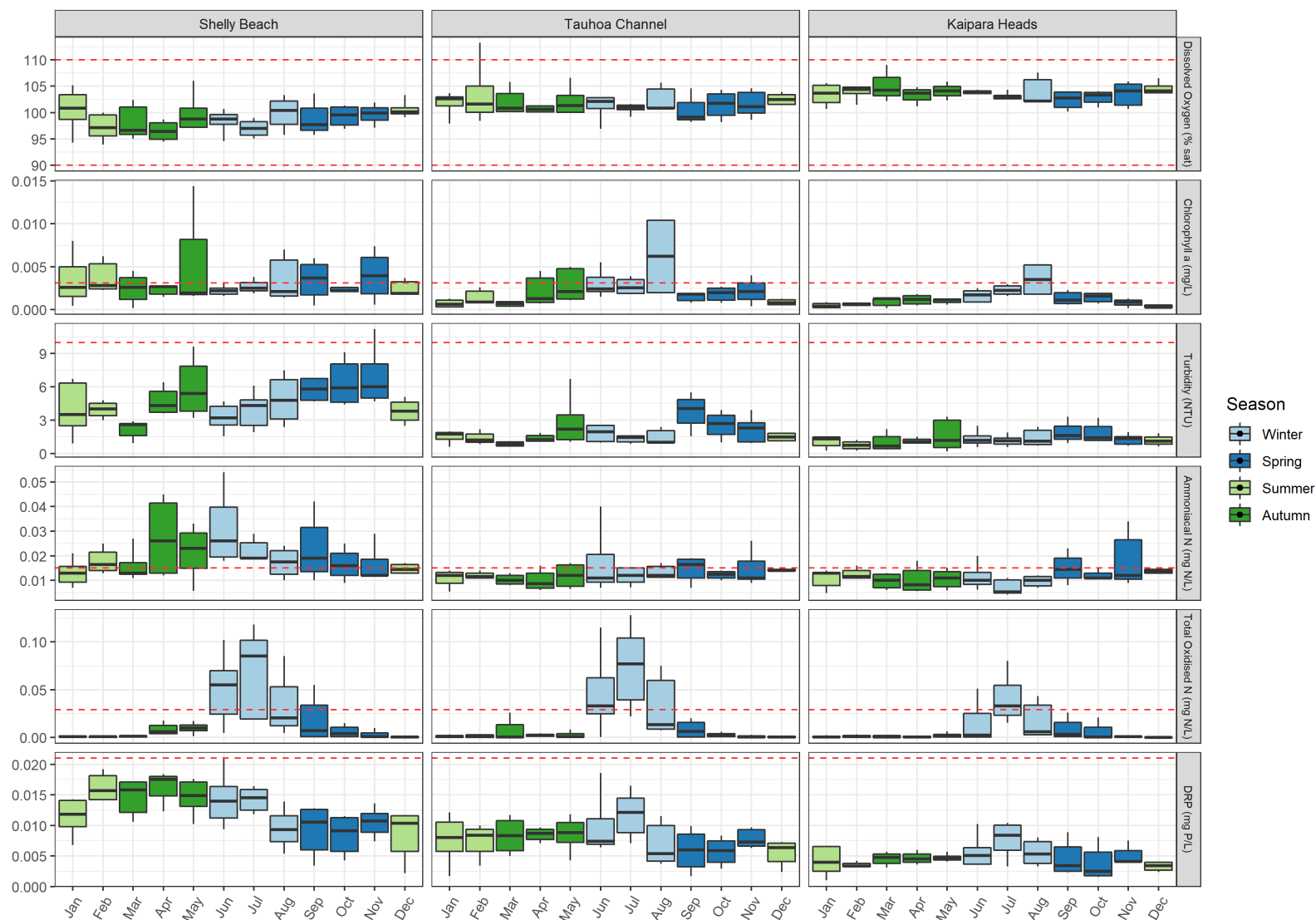


Figure 7 Seasonal box plots for the 2018 to 2022 hydrological years for Kaipara Harbour monitoring sites – Part 2. Box plots show the 5th percentile (lower whisker), 25th percentile (lower quartile), median (middle line), 75th percentile (upper quartile), and 95th percentile (upper whisker). Dashed red lines show the Auckland Council Water Quality Index Guideline Values.

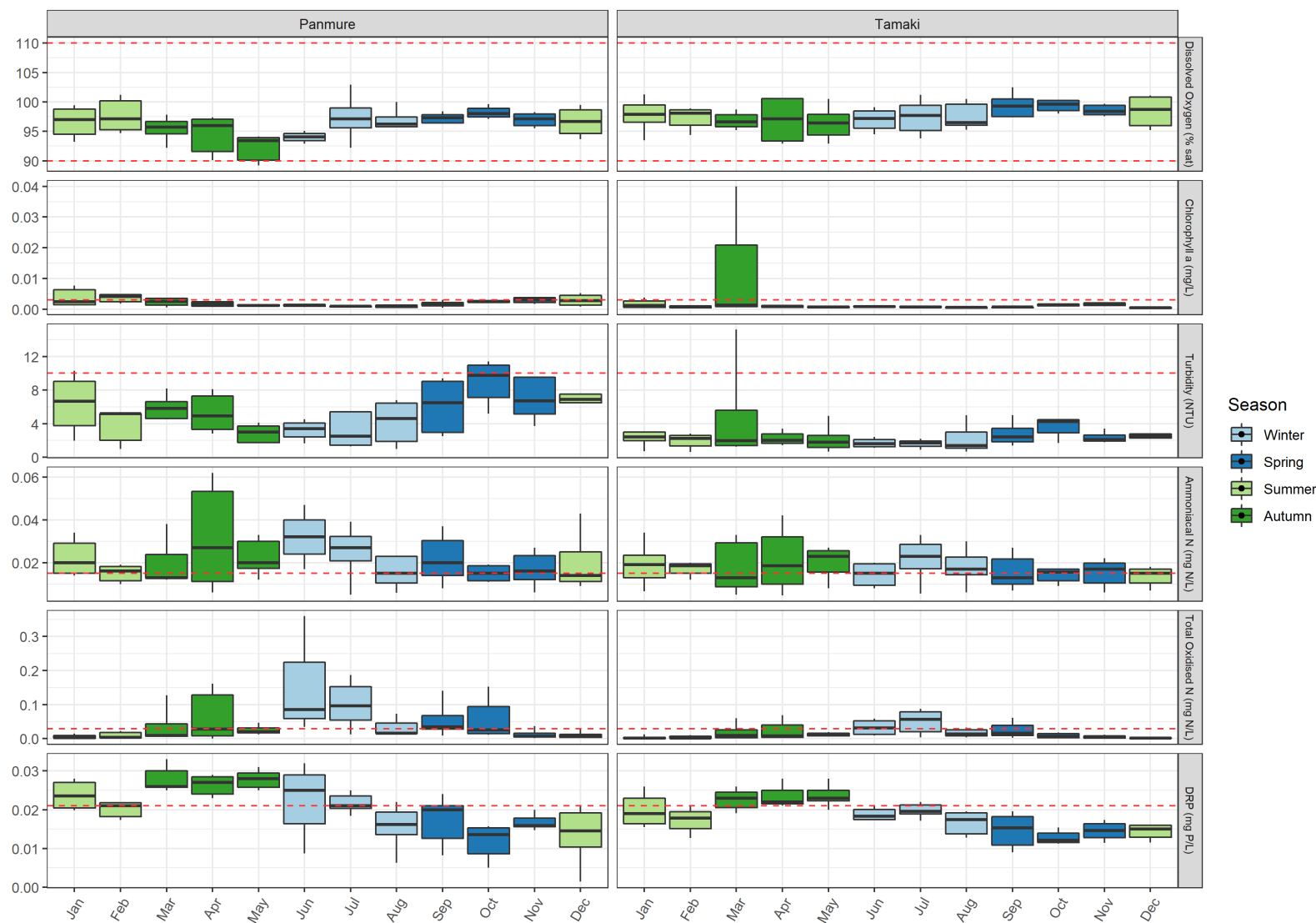


Figure 8 Seasonal box plots for the 2018 to 2022 hydrological years for Tamaki Estuary monitoring sites. Box plots show the 5th percentile (lower whisker), 25th percentile (lower quartile), median (middle line), 75th percentile (upper quartile), and 95th percentile (upper whisker). Dashed red lines show the Auckland Council Water Quality Index Guideline Values.

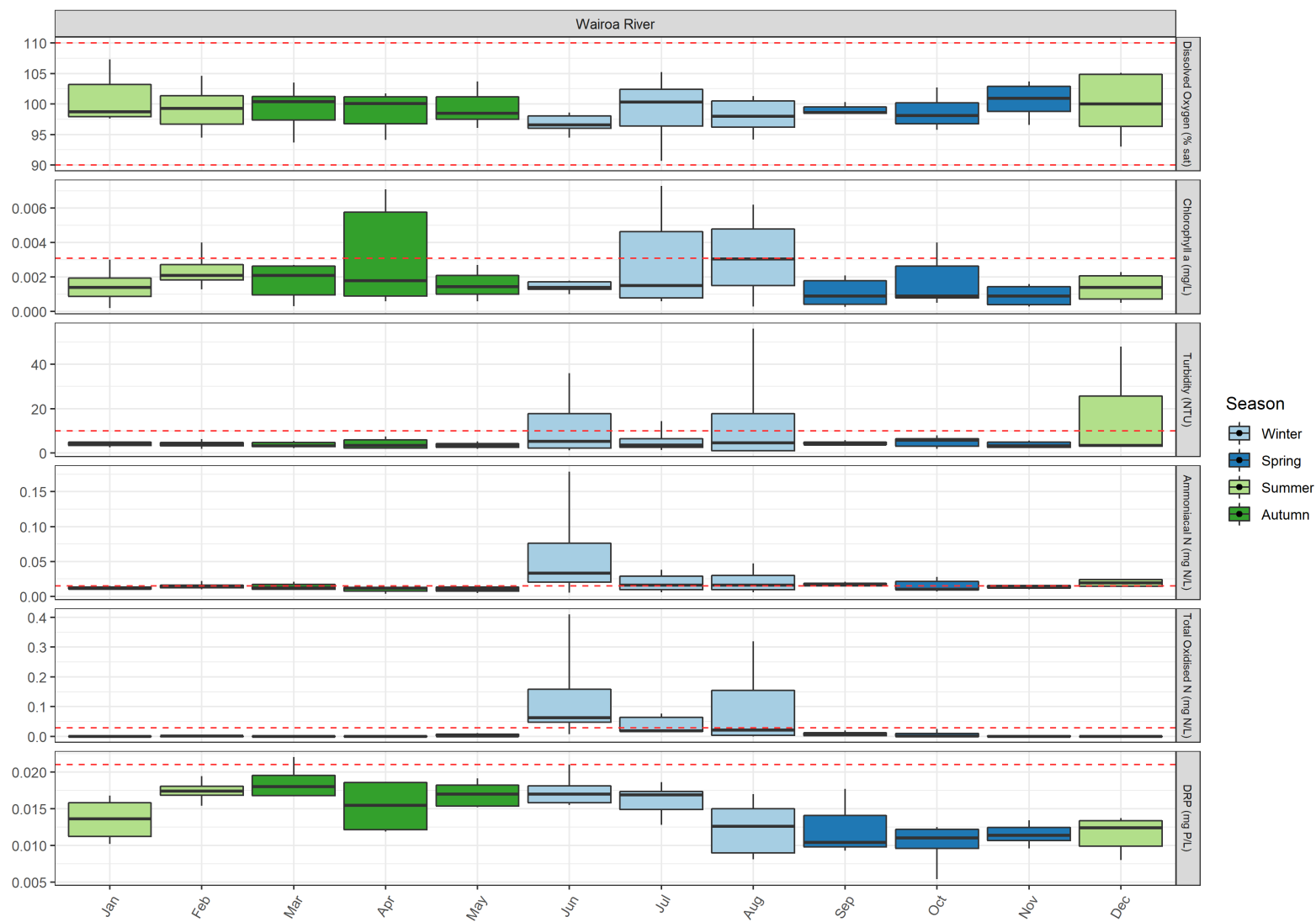


Figure 9 Seasonal box plots for the 2018 to 2022 hydrological years for Wairoa River Mouth. Box plots show the 5th percentile (lower whisker), 25th percentile (lower quartile), median (middle line), 75th percentile (upper quartile), and 95th percentile (upper whisker). Dashed red lines show the Auckland Council Water Quality Index Guideline Values.