

# AUCKLAND'S HERITAGE COUNTS

## KEY STATISTICS 2022

**Auckland's Heritage Counts programme** was established in 2018 to showcase the extent and variety of Auckland's heritage and the social and economic value these places have. Since then, a report has been produced each year. This year's report is a shorter report, highlighting key statistics. Unless otherwise stated, all the statistics are from an analysis of the Auckland Unitary Plan (AUP) Historic Heritage Overlay or from Auckland Council Heritage Unit records.

Dr David Bade  
Specialist - Built Heritage  
Auckland Council

## Heritage is all around us and shapes our identity



At the time of writing, seven historic heritage places and four historic heritage areas are proposed to be added to the schedule through Plan Change 81. Similarly, through Plan Change 82, 99 amendments (such as updating the category status or planning maps of a place) are proposed. The proposed amendments include the deletion and merging of some historic heritage places.

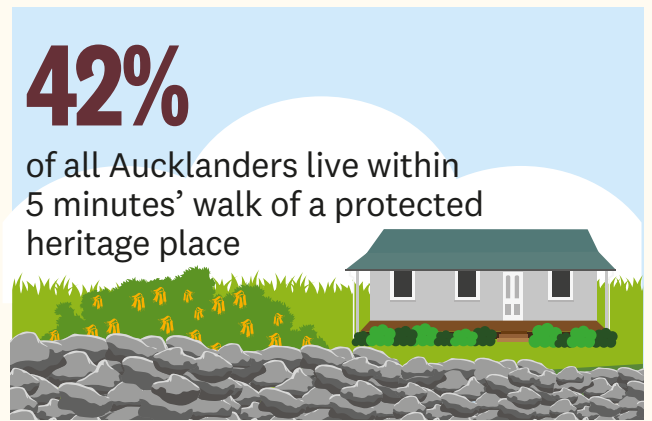
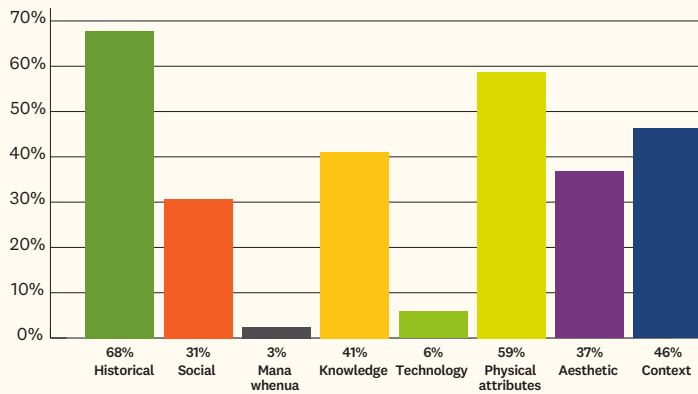
### Types of heritage places currently protected\*



\*Does not include heritage places protected in the Hauraki Gulf Islands District Plan.



Distribution of heritage values across all protected heritage places in Auckland\*



\*Does not include heritage places protected in the Hauraki Gulf Islands District Plan.

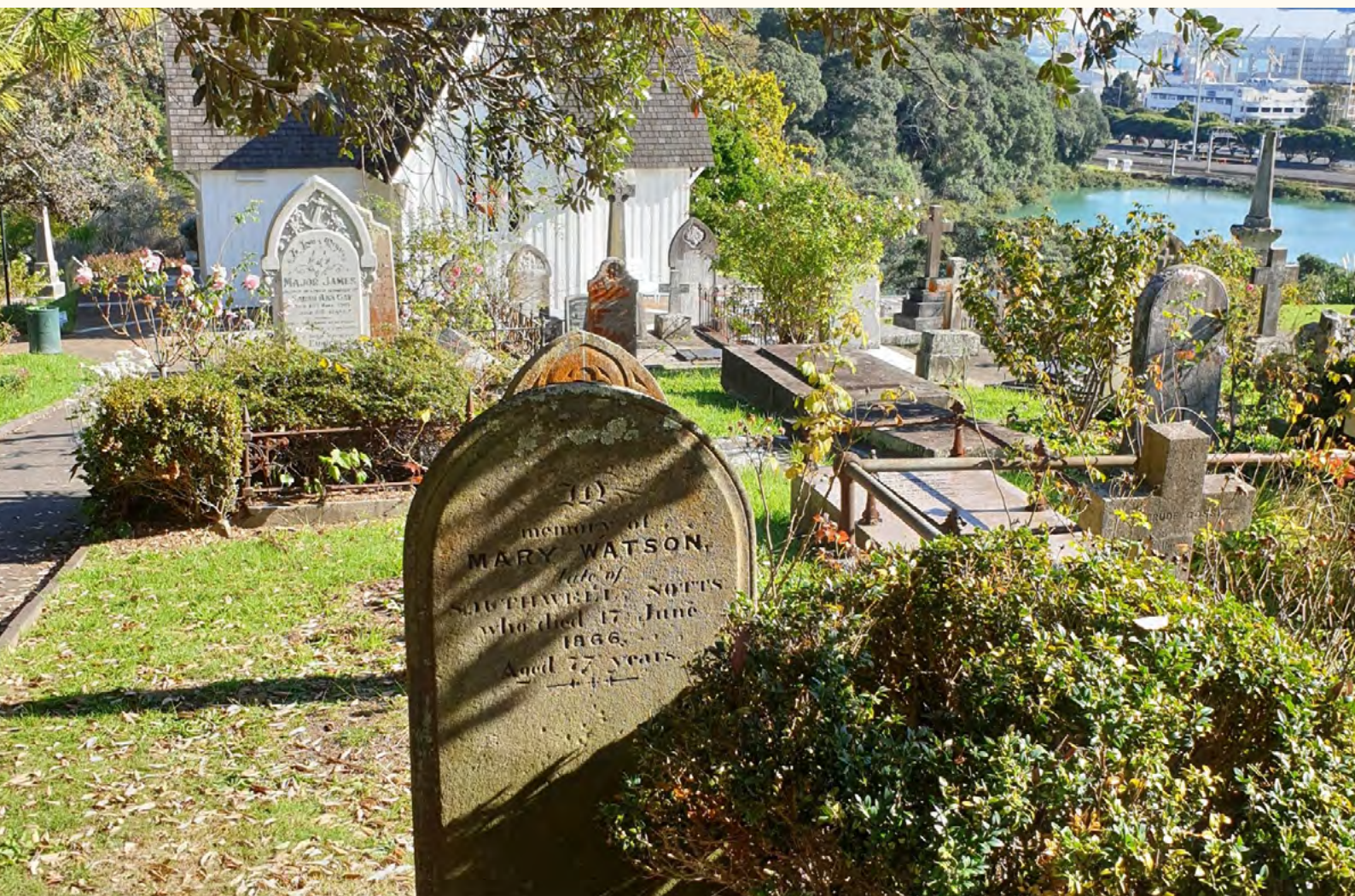
**Heritage protection only affects a small amount of Auckland's land area:**

**0.47%**

of Auckland's land area is  
protected for its historic  
heritage values

**0.83%**

of property parcels  
in Auckland are protected  
for historic heritage values



St Stephen's Chapel and cemetery, Parnell (Category A, ID 01707) (Joe Mills, Auckland Council).

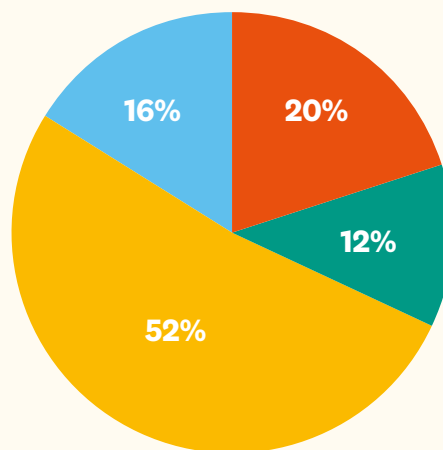
## Our heritage is protected through the Auckland Unitary Plan

### Proportion of resource consents granted (2016-2022)

Note: the proposal submitted and the proposal finally granted may differ following discussion between applicants and heritage specialists.

**99.6%**

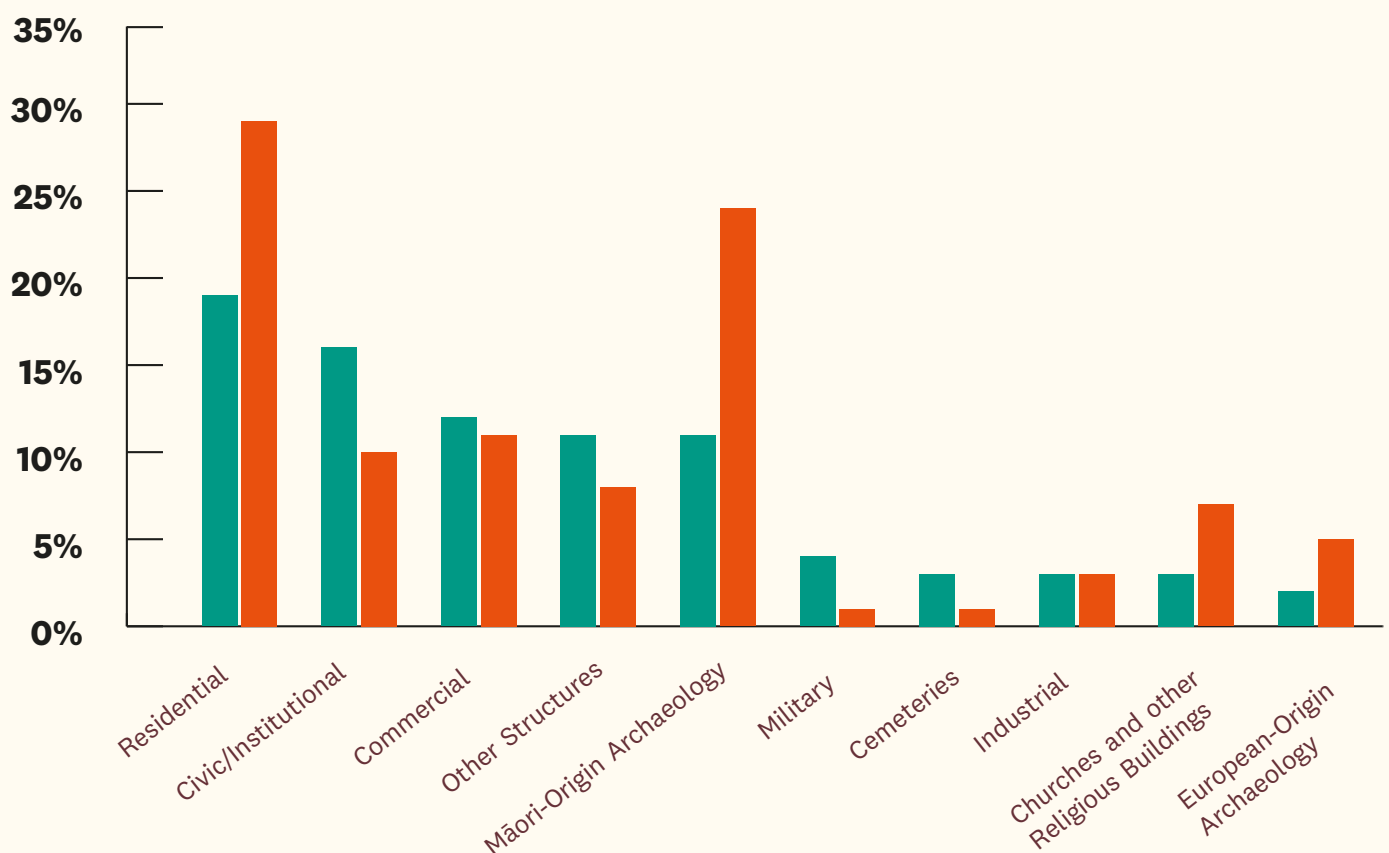
Historic heritage



**Category A**  
**Category A\***  
**Category B**  
**Historic Heritage Area**

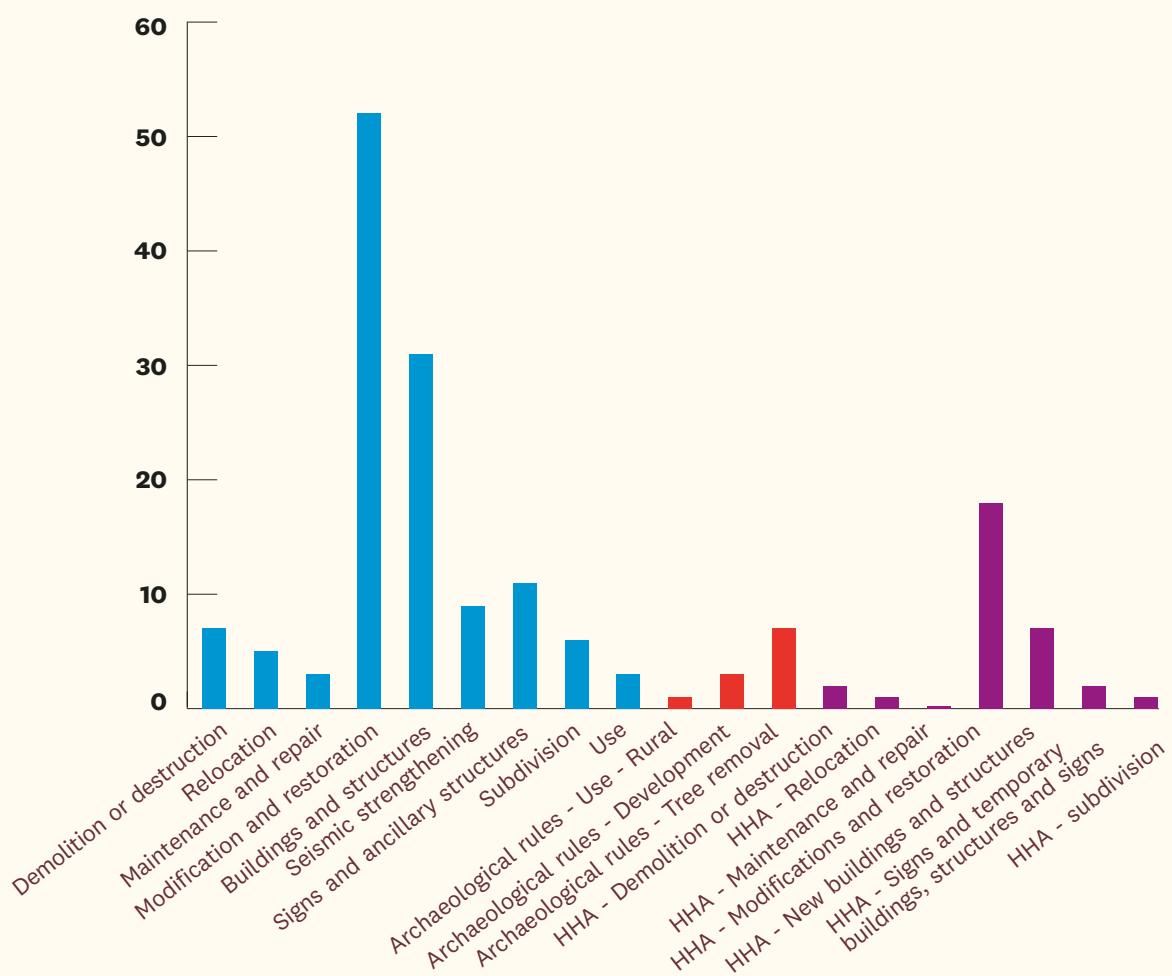
Breakdown of historic heritage resource consents by Historic Heritage Place Category and Historic Heritage Area (2016-2022)

### Historic heritage resource consents by type of historic heritage place (2016-2022) compared with the overall proportion in the Schedule of Historic Heritage (Schedule 14.1)





## Type of activity for historic heritage resource consents (2016-2021).



Blue bars relate to general historic heritage place resource consents, red relates to historic heritage places with archaeological rules, and purple bars relate to historic heritage areas.



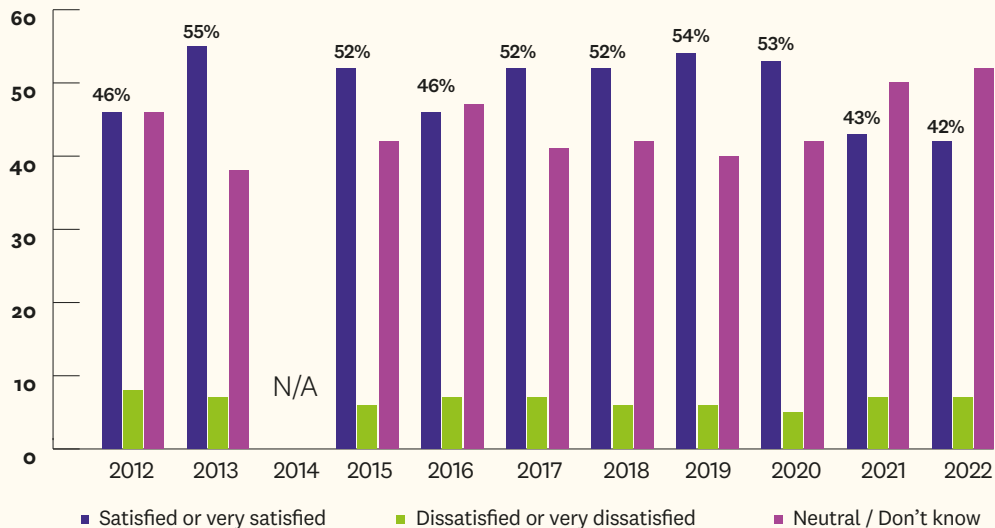
Central Fire Station, Auckland Central (Category B, ID 01997) (Rachel Ford, Auckland Council).

# Heritage management



Since 2012, around half of all surveyed Aucklanders have remained satisfied with the overall management of heritage in Auckland<sup>1</sup>

## Community satisfaction



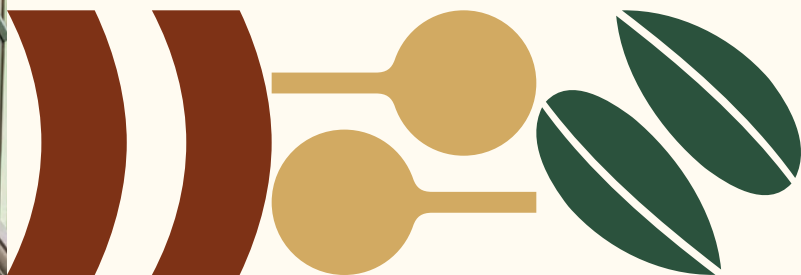
<sup>1</sup> Auckland Residents Survey 2012 – 2022. This survey was not carried out in 2014. The sample size each year was approximately 4,000 people.



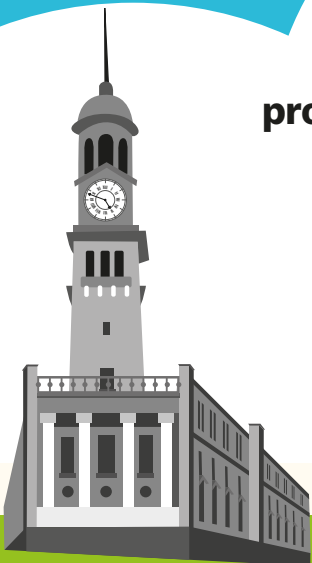
### **George Court Department Store (former), Newton (Category A, ID 01979) (Rachel Ford, Auckland Council).**

Last year, this building received Auckland Council Regional Historic Heritage Grant funding towards the restoration of the building's clock.

The clock is a prominent feature on the street and the only timepiece on Karangahape Road. It has been used since the 1920s by shoppers in the busy retail area. Over the years the clock's inner working has deteriorated and the clock was not keeping good time, now passers-by can be assured that it will be keeping good time for years to come.



# Aucklanders engage with heritage



**Auckland Council**  
provides detailed, informative guides for  
**59** heritage trails in Auckland

Journey through historic  
points of interest in your  
local area **here**  
or click on the links below.



There are  
**95**  
heritage/historical  
societies in Auckland



**Aucklanders are passionate about heritage and are active members of organisations related to heritage, such as:**



HERITAGE NEW ZEALAND  
**POUHERE TAONGA**  
Heritage New Zealand  
Pouhere Taonga

3,654 (25%) are Auckland members.



ICOMOS New Zealand  
58 (36%) are  
Auckland members.



**Professional Historians'**  
Association of  
New Zealand/Aotearoa

36 (22%) are Auckland members.



NEW ZEALAND  
ARCHAEOLOGICAL  
ASSOCIATION  
**New Zealand  
Archaeological Association**

102 (33%) are Auckland members.



**National Oral History  
Association of New Zealand**  
32 (19%) are Auckland members.

There were **21,700** page views of the **Auckland Council Heritage webpage** in the past year. That is **up 23%** from last year and **up 104%** from 2016 –17.

**1,926** people have signed up to the Heritage Unit's Te Kahu – Focus on Heritage eNewsletter. That is **up 4%** from last year and **up 20%** from 2016 – 17. **Sign up here.**

Engagement with Auckland Heritage social media accounts continued to grow in 2022.

There are **5,944 followers** of the **Auckland Heritage Facebook page**, **up 8%** since last year, and **up 65%** since 2018. There are **1,598 followers** of the **Auckland Heritage Instagram page**, **up 8%** since last year, and **up 166%** since 2018.

---

## Heritage grants

Heritage grants are offered by Auckland Council and other agencies to assist and encourage the conservation of heritage places.

### **Auckland Council Local Board Heritage Grants Between 2015 and 2022**

**158** Auckland Council Local Board Heritage grants were awarded totalling **\$635,373**

### **Auckland Council Regional Historic Heritage Grants Between 2015 and 2022**

**28** Auckland Council Regional Heritage grants were awarded totalling **\$333,617**

### **Lottery Environment and Heritage Fund Between 2015 and 2022**

**39** Lottery Environment and Heritage Fund grants were awarded totalling **\$11,454,267**

### **Foundation North Grants Between 2015 and 2022**

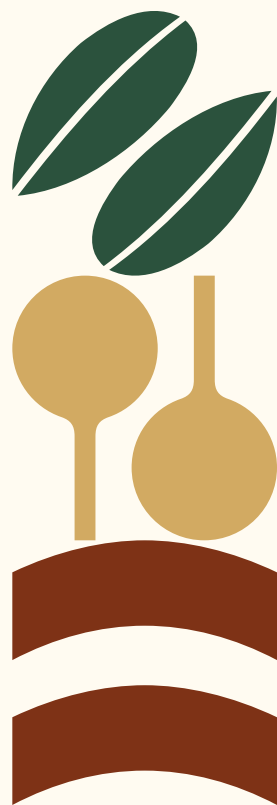
**64** Foundation North grants were awarded totalling **\$3,196,050**

### **Heritage New Zealand Grants Between 2015 and 2022**

**15** National Heritage Preservation Incentive Fund grants (administered by Heritage New Zealand Pouhere Taonga) were awarded totalling **\$659,200**

### **Heritage EQUIP Grants Between 2015 and 2021**

**6** Heritage EQUIP grants were awarded totalling **\$2,214,678**. This grants fund was ceased in 2021.





# Heritage attracts visitors to Auckland<sup>2</sup>

Of those domestic visitors who visited Auckland in 2021-22, **22%** associated “history/heritage” with Auckland. More people associated Auckland with “history/heritage” than wineries (**14%**) and walking and hiking (**14%**). Of those aged over 60, **29%** associated Auckland with “history/heritage”.

Of Australians who visited Auckland in 2021-22, **33%** associated “history/heritage” with Auckland. This is the third highest activity or experience listed by Australian tourists, only below “restaurants, cafes and bars” (**43%**) and “shopping” (**39%**).

## The proportion of visitors who visited “Art galleries, museums, historic sites” and “Other cultural or heritage attractions” by region in Auckland (October 2018 to June 2022)



Devonport. © Auckland Council

### NORTH

**5%** of domestic visitors  
**4%** of international visitors



Auckland Museum. © Auckland Council

### CENTRAL

**19%** of domestic visitors  
**31%** of international visitors



Waiheke Museum. © Auckland Council

### HAURAKI GULF ISLANDS

**3%** of domestic visitors  
**2%** of international visitors



Whatipu Lodge complex.  
© David Bade, Auckland Council.

### WEST

**3%** of domestic visitors  
**1%** of international visitors



Manukau Lighthouse. © Auckland Council

### SOUTH

**5%** of domestic visitors  
**1%** of international visitors



Howick Historical Society. © Auckland Council

### EAST

**3%** of domestic visitors  
**1%** of international visitors

<sup>2</sup> Angus & Associates, Visitor Insights Programme: Visitor Perceptions - Auckland, Year End June 2022.



Auckland's Heritage Counts 2022: Key statistics © 2022 Auckland Council, New Zealand  
Heritage Unit, Plans and Places Department  
Dr David Bade, Specialist – Built Heritage  
October 2022

ISSN 2744-709X

Auckland Council disclaims any liability whatsoever in connection with any action taken in reliance of this document for any error, deficiency, flaw, or omission contained in it.

This document is licensed for re-use under the <https://creativecommons.org/licenses/by/4.0>  
Creative Commons Attribution 4.0 International licence.

In summary, you are free to copy, distribute and adapt the material, as long as you attribute it to Auckland Council and abide by the other licence terms.

<https://creativecommons.org/licenses/by/4.0>

