

# HAURAKI GULF ISLANDS REPORTING AREA 2018

Includes Great Barrier Island and Waiheke Island Local Boards

## STATE OF AUCKLAND FRESHWATER REPORT CARD

### WATER QUALITY



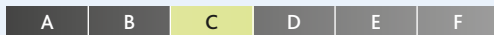
### HYDROLOGY



### HABITAT QUALITY



### BIODIVERSITY



The grades are made up of the following indicators:

**Water quality:** Water samples are tested for a range of parameters including temperature, pH, dissolved oxygen, nutrients and E. coli. The results for each site are compared against reference sites for Auckland to produce a water quality index.

**Hydrology:** Stream reaches are assessed for how well connected they are to upstream and downstream reaches, and the floodplain.

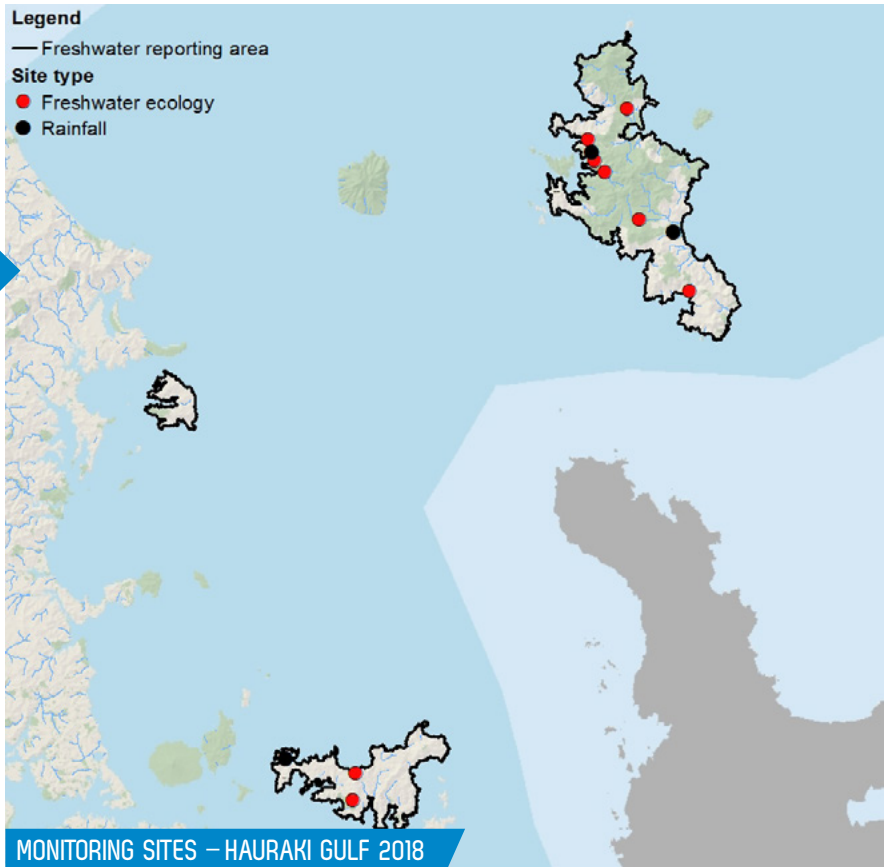
**Habitat quality:** The diversity and quality of habitats both in the streams and in the riparian margins is assessed.

**Biodiversity:** Field assessments are made to determine the type and amount of native plants and animals. Stream macroinvertebrate samples are also collected to assess the diversity and tolerance levels of the macroinvertebrate community.

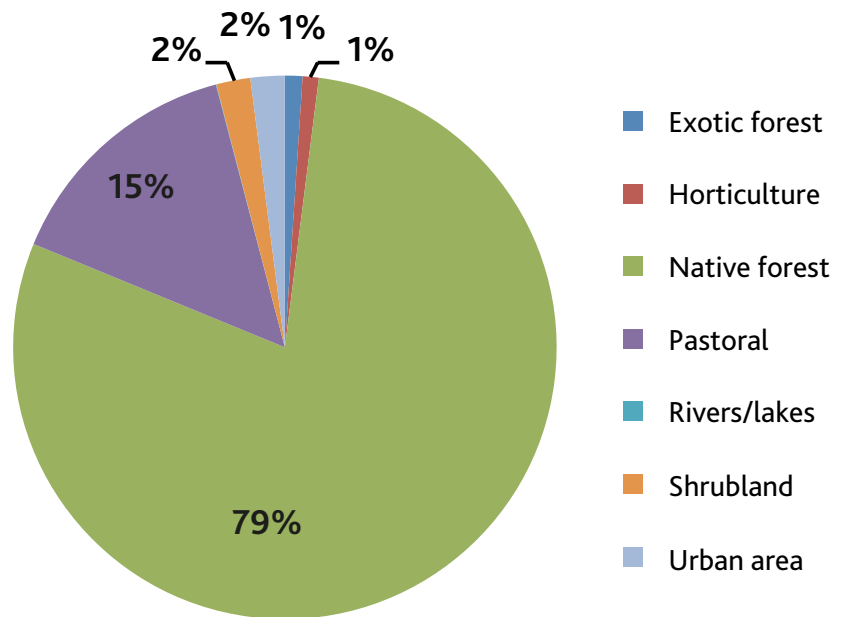
Each indicator is made up of several parameters. These grades represent a summary of indicator results from 2016 and 2017 from individual sites which are amalgamated for each reporting area to provide an indicator grade.

These report cards are not designed to track trends or report on National Policy Statement for Freshwater (NPS-FM) attributes which relate to specific parameters and bands. Note that grades given to amalgamated results or indicators here do not relate to the grades assigned to individual parameters in the NPS-FM.

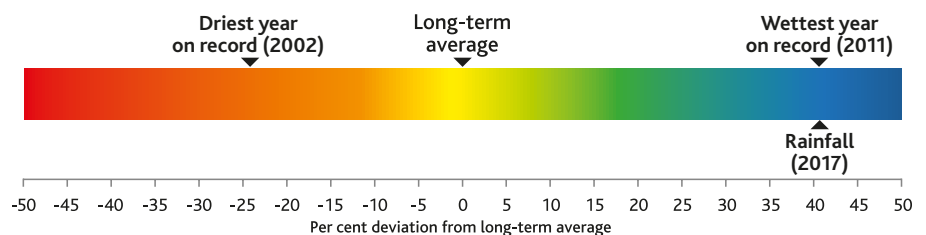
More detailed analyses on sites and trends are presented in technical reports available on Knowledge Auckland.



### HAURAKI GULF LAND COVER



### HAURAKI GULF RAINFALL



Mean rainfall in 2017 (1516 mm) was 41 per cent greater than the long-term average (1075 mm). The longest rainfall record in the Hauraki Gulf Islands reporting area is 16 years at Matiatia Bay.

# MONITORING BACKGROUND AND INTERPRETATION

Auckland Council's State of the Environment (SOE) monitoring has been building a record of Auckland's environment for more than 25 years. This information is critical to the effective management of Auckland's natural environment.

The monitoring programme shows there is a strong relationship between the health of the rivers and the type of land cover in the surrounding catchment. Rivers that drain forested catchments (particularly native forests) typically have excellent water quality and ecological health, while rivers that drain urban catchments generally have poor water quality and ecological health.

The Hauraki Gulf Island reporting area has large areas of native forest catchment and pastoral land and therefore generally very good water quality. Low levels of urban development means there is little channel modification or pollution from discharges and stormwater. However urban development is increasing on Waiheke Island. There may be diffuse sources of contaminants from pastoral land and physical damage from stock. The D grade for water quality arises from the two rural water quality sites on Waiheke Island which both had a water quality grade of D.

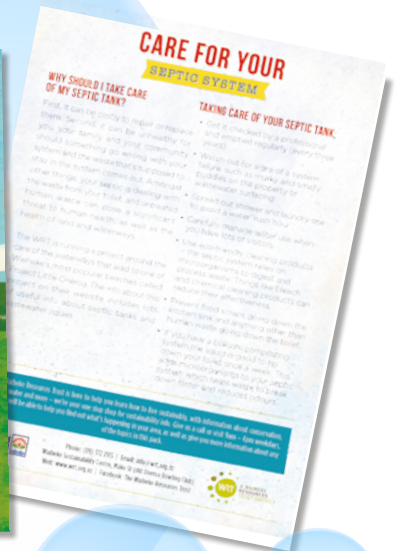
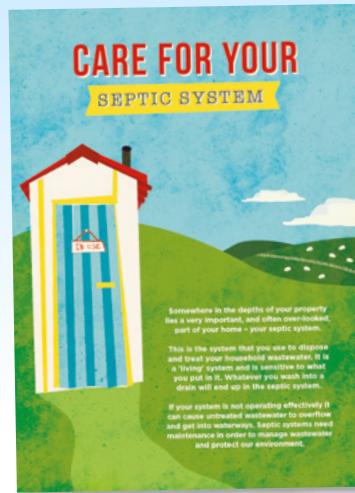
## SPOTLIGHT ON HAURAKI GULF ISLANDS

On Waiheke Island, and with support of the Local Board, Auckland Council continues to implement educational efforts around the importance of water quality and the appropriate maintenance of onsite wastewater systems (OSWW) throughout

the Little Oneroa Project which now includes the Blackpool, Ostend and Surfdale catchments. Activities include community planting and weeding days, OSWW maintenance flyers, and water consumption and availability.



Little Oneroa Beach



### FIND OUT MORE

This report card is part of a series prepared by the Auckland Council's Research and Evaluation Unit, which undertakes monitoring and research to provide information and evidence to inform the council's activities and reporting. More report cards can be found at: [aucklandcouncil.govt.nz/environment](http://aucklandcouncil.govt.nz/environment). The report card series includes reporting on freshwater, terrestrial, marine, air, soil, capacity for growth, demographics and quality of life.

For more information: e-mail [rimu@aucklandcouncil.govt.nz](mailto:rimu@aucklandcouncil.govt.nz) or call us on 09 301 0101.

### GET INVOLVED

Auckland Council provides more than 20 environmental programmes across the region that you can get involved in. To find out more on how you can help visit: [aucklandcouncil.govt.nz](http://aucklandcouncil.govt.nz)