



Auckland's urban form

Updating RIMU's most popular publication

Dr Leon Hoffman | Land Use and Infrastructure Research and Evaluation | Research and Evaluation Unit | June 2019

A ten-year update

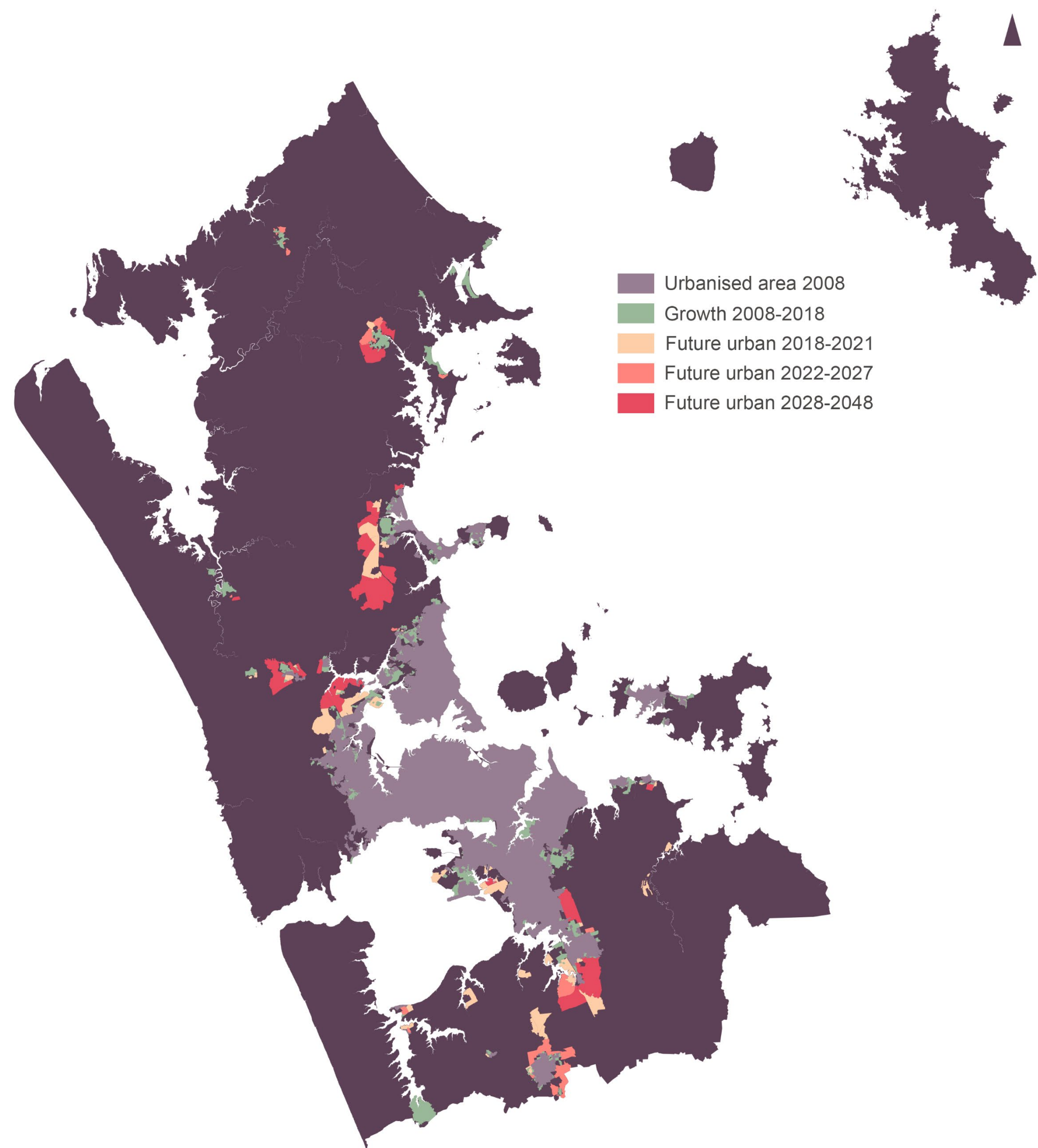
A brief history of Auckland's urban form is a short publication first produced by Auckland Regional Council in 2009. It maps and describes 170 years of settlement and urban development across the Tāmaki isthmus and the wider Auckland region. Ten years later it remains the most popular download from RIMU's Knowledge Auckland website/publication repository.

In 2019, *A brief history of Auckland's urban form* is being updated after a decade of intensive urban growth across Tāmaki-Makaurau. Essential to this edition is a new chapter highlighting urban development and growth during the 2008-2018 decade. This includes local government amalgamation, housing densification and development, transport infrastructure improvements and mana whenua engagement in the urban development and design process.

The future of Tāmaki-Makaurau

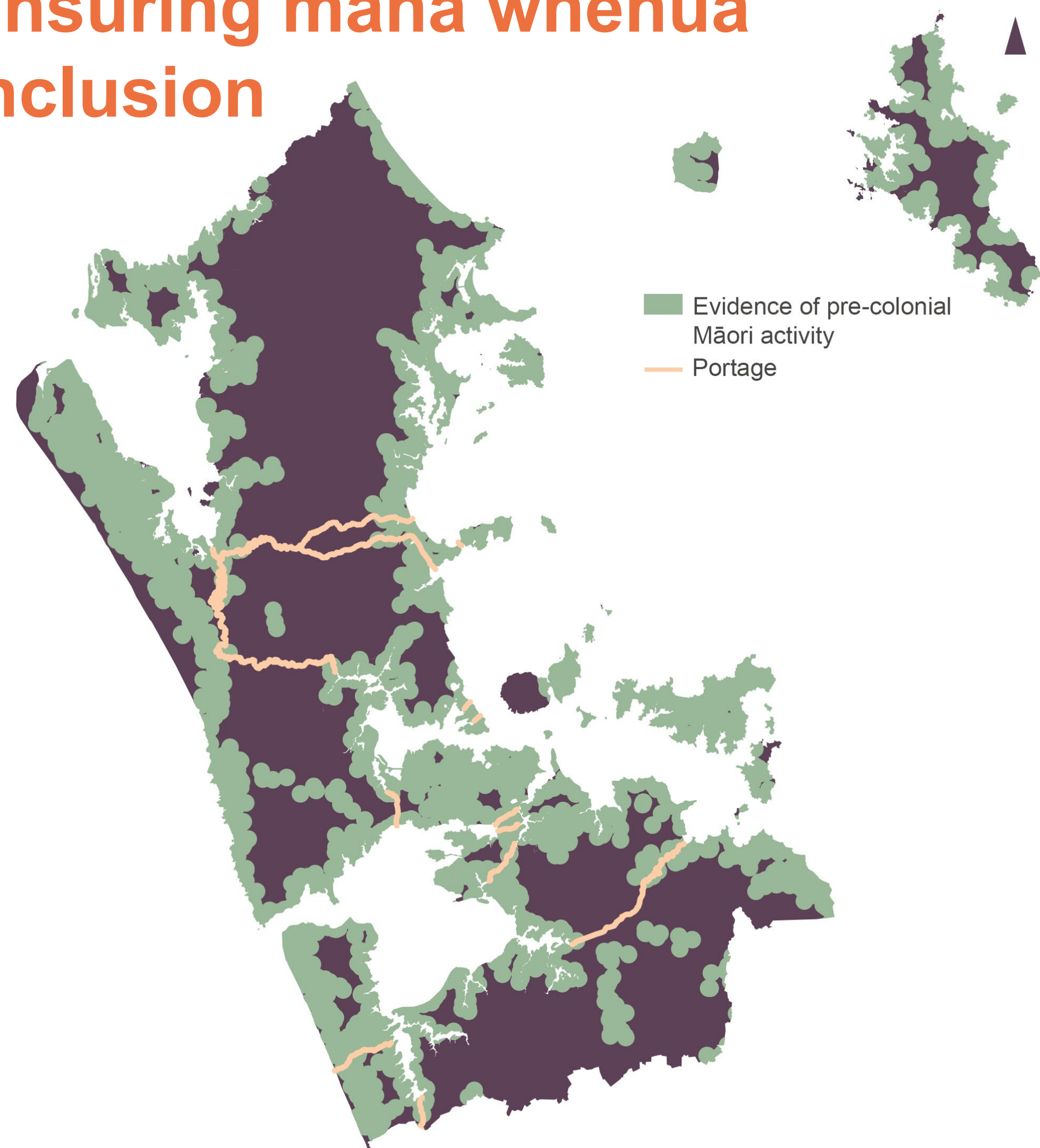
Accompanying the report's account of the growth of contemporary Tāmaki-Makaurau, the 2019 publication also provides a map and chapter detailing the region's anticipated development up until 2048 (as outlined in the Auckland Plan 2050).

These maps of Auckland's future and historical urban areas will be available in an animated format alongside the final publication of *A brief history of Auckland's urban form* (2019) before the end of 2019.



Map 1: Urban growth of Auckland 2008-2018 and designated future urban areas (Auckland Plan 2050).

Ensuring mana whenua inclusion



Map 2: Evidence of pre-colonial Māori occupation and activity. Data source: Auckland Council cultural heritage inventory.

The 2019 update of *A brief history of Auckland's urban form* includes a new chapter providing historical context to the settlement of the Tāmaki isthmus and surrounding area, detailing Māori occupation and activity prior to William Hobson's 1840 land purchase.

Acknowledging the importance of mana whenua, the 2019 edition also includes Māori narrative into the colonial and postcolonial histories of Auckland's urban expansion. Included are histories that have divided and shaped Tāmaki-Makaurau, such as the vacillating conflicts over the Ōrākei block and the maturing engagements with mana whenua that characterise Tāmaki-Makaurau's contemporary urban development.

